

平成の龍神街道

Heisei no Ryujin Kaido



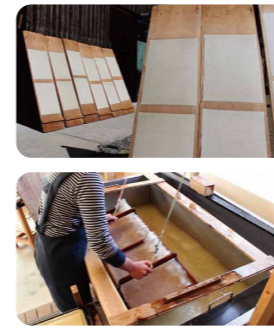
徳川様
の通り
を
行
く
道



Tokugawa Yorinobu, the 10th son of Tokugawa Ieyasu, was the feudal lord of the House of Kishu (present day Wakayama Prefecture) in the early Edo period. He was good at studies and also an Onsen lover. He enjoyed his 76km trip to the isolated resort **Ryujin Onsen** Hot Springs from his castle in Wakayama city for his vacation. Ryujin Onsen is also known as one of Japan's three famous Bijin-no-yu, or beautifying hot springs. Yorinobu helped to build Kamigoten Ryokan for his stay and Shimogoten Ryokan for his attendants in the Ryujin Onsen area. The road Tokugawa Yorinobu took from his castle to Ryujin Onsen Hot Springs was called **Ryujin Kaido** - "The Dragon God Road". Nowadays, to experience this historical road from Wakayama Castle to Ryujin Onsen, two new drive routes are recommended. If you are an experienced driver and want to enjoy beautiful local scenery, take the **"Edo period route"**. If you prefer a bigger road, **"Easy route"** will suit you. As a matter of fact, Ryujin Kaido is known as **"The Road to Beauty"** today. Embark on your journey toward the secluded Onsen and discover the secrets to health and beauty. What are you waiting for?



昨日より
美人に
なれる旅

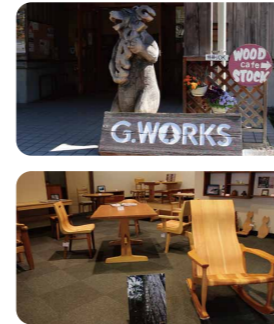


⑥ "The Road to Beauty" YASUDA-GAMI

Warashi 体験交流工房わらし

The studio of Wakayama's traditional Washi paper called "Yasuda-gami". You can experience paper making at this studio. The ingredients of Washi paper contain vitamin B, which will make your hands nice and smooth!

TEL: 0737-25-0621
Address: Wakayama Prefecture, Arida-gun, Aridagawa-cho, Shimizu 1218-1
和歌山県有田郡有田川清水1218-1
Hours: 8:30a.m.-5:00p.m. (workshop 9:00a.m.-3:00p.m.)
Closed on Wednesdays, Thursdays, Holidays, 1/1-3, 8/14-15
Parking: Available



⑦ "The Road to Beauty" WOOD FURNITURE

G. WORKS

The handcrafted furniture shop and gallery. This shop is full of freshly produced furniture made from locally grown trees and beautiful art works by local artists. The aroma of Japanese cedar helps you relax and leads to a good sleep!

TEL: 0739-77-0785
Address: Wakayama Prefecture, Tanabe city, Ryujinmura, Fukui493
和歌山県田辺市龍神村福井493
Hours: 10:00a.m.-5:00p.m.
Closed on Wednesdays
(unless Wednesday falls on a holiday, in which case closed Thursday)
Parking: Available



⑧ "The Road to Beauty" TOFU Café

Ryujin Tofu Café Loin るあん

Everybody knows Tofu is a staple of "beauty food". Loin's Tofu is made over a wood fire in the traditional Ryujin custom. The fresh air and clean water of isolated Ryujin village make their Tofu flavorful and superb! A lot of customers come a long distance to enjoy tofu dishes at Tofu Café.

TEL: 0739-79-0637
Address: Wakayama Prefecture, Tanabe city, Ryujinmura, Komatagawa 259
和歌山県田辺市龍神村小又川259
Tofu shop: 9:00a.m.-Limited quantity available
Tofu Café: 10:00a.m.-6:00p.m. on Saturdays, Sundays, Mondays
Closed on Wednesdays, Fridays
Parking: Available



⑨ "The Road to Beauty" RYUJIN ONSEN

Kamigoten Ryokan 上御殿

TEL: 0739-79-0005
Address: Wakayama Prefecture, Tanabe city, Ryujinmura, Ryujin42
和歌山県田辺市龍神村龍神42
Check-in: 2:30p.m. Check-out: 10:00a.m. Parking: Available



Shimogoten Ryokan 下御殿

TEL: 0739-79-0007
Address: Wakayama Prefecture, Tanabe city, Ryujinmura, Ryujin38
和歌山県田辺市龍神村龍神38
Check-in: 5:30p.m. Check-out: 10:00a.m. Parking: Available

Ryujin Onsen was one of the best hot springs in Japan in the Edo period and was used as a resort area for the Kishu Tokugawa family. Ryujin Onsen Hot Springs waters contain good quality of sodium bicarbonate. Once you enter the hot spring, you will feel as though you are soaked in lotion, relaxed in smooth and silky waters that will leave your skin fresh and beautiful. Ryujin Onsen is one of Japan's three famous beautifying hot springs. The Ryujin family has maintained Kamigoten and Shimogoten as high-class inns since 1657. You will enjoy Maki baths (Podocarp tree) at Kamigoten Ryokan and Tatami mat baths at Shimogoten Ryokan, with both inns featuring open-air-baths overlooking the crystal clear Hidakagawa river. Enjoy locally grown vegetables from the Ryujin mountains and fresh game cuisine. The secluded Onsen is the perfect place to finish your journey.



Tokugawa Yorinobu 徳川 頼宣 (1602~1671)

The 10th son of Tokugawa Ieyasu was the feudal lord of the House of Kishu (present day Wakayama Prefecture) in the early Edo period. He built Kamigoten Ryokan and Shimogoten Ryokan at Ryujin Onsen area for his bathing and relaxing.

Japan's three famous beautifying hot springs 日本三美人の湯

Kawayu Onsen in Gunma prefecture, Ryujin Onsen in Wakayama prefecture, and Yunokawa Onsen in Shimane prefecture are known as Japan's three famous beautifying hot springs. Ryujin Onsen Hot Springs are famous for its high therapeutic effects regarding issues such as "poor circulation", "neuralgia", "stiff back," etc.

平成の龍神街道

Video on web





① "The Road to Beauty" HONNOJI MANJU

Souhonke Surugaya 総本家駿河屋

This traditional Japanese confectioneries store has operated for over 550 years. Tokugawa Yorinobu used to relish their steamed bread called Honnoji manju. Honnoji manju is a Sakamanju, which is a type of steamed bread and is made from Sake yeast, which helps your skin keep white and silky.

TEL: 073-431-3411
Address: Wakayama Prefecture, Wakayama City, Suruga-cho12
和歌山県和歌山市駿河町12
Hours: 9:00a.m.-6:00p.m.
Open year round.
(Temporarily closed)
Parking: Available

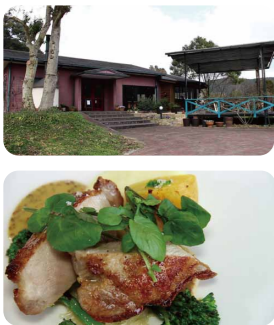


② "The Road to Beauty" SHURO-TAWASHI

Takada Kouzou Shouten 高田耕造商店

Kukai brought back palm seeds from China to Koyasan in the Heian period. The palm trees grew and spread along the Ryujin Kaido. People used to make many kinds of nice and soft brushes out of palm bark. The scrub brushes, called "Shuro-Tawashi" of this store can be used for bathing to make your body nice and smooth.

TEL: 073-487-1264
Address: Wakayama Prefecture, Kainan City, Mukunoki 97-2
和歌山県海南市棟木97-2
Hours: 9:00a.m.-5:00p.m.
Closed on Saturdays, Sundays, and National holidays
Parking: Available
(reservation required)



③ "The Road to Beauty" BEAUTY FOODS

Chez Minami

You can enjoy fascinating creative French cuisine with locally grown fresh vegetables. Experience these "beauty foods" that are guaranteed to improve your health and condition.

TEL: 073-495-2803
Address: Wakayama Prefecture, Kaisougun, Kiminocho, Miogawa759-3
和歌山県海草郡紀美野町三尾川759-3
Hours: 11:30a.m.-2:00p.m.
(reservation required)
6:30p.m.-8:00p.m.
(reservation required)
Closed on Mondays
Parking: Available



④ "The Road to Beauty" HEALTHIEST GELATO

Kiminoka キミノーカ

This famous and popular gelato café is run by local growers. You can relish many unique flavors of locally grown vegetables and fruits all year round. Healthiest gelato ever!!

TEL: 073-495-2910
Address: Wakayama Prefecture, Kaisougun, Kiminocho, Miogawa785-3
和歌山県海草郡紀美野町三尾川785-3
Hours: 11:00a.m. (Holidays 10:00a.m.)-5:00p.m.
Closed on Mondays
(unless Monday falls on a holiday, in which case closed Tuesday)
Parking: Available

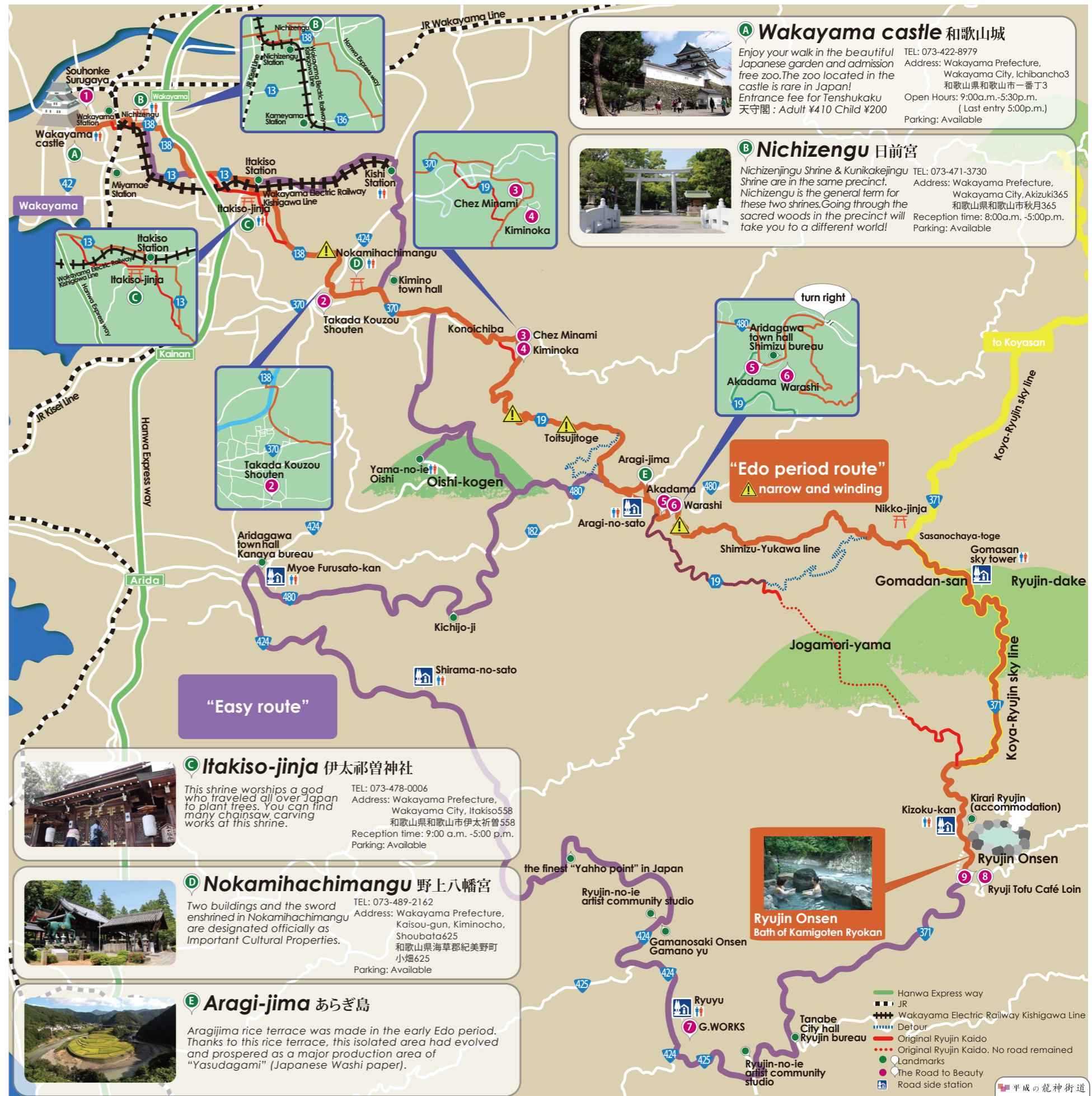


⑤ "The Road to Beauty" WASABI-ZUSHI

Akadama 赤玉

If you want to enjoy exquisite rice that is harvested from the Aragijima rice terrace and witness many famous traditional local dishes, try Akadama. Their traditional "Wasabi-zushi" is the best ever. "Wasabizushi" is sushi with preserved-fish wrapped in pickled Japanese green horseradish leaves. Wasabi helps keep your skin young!

TEL: 0737-25-0371
Address: Wakayama Prefecture, Arida-gun, Aridagawa-cho, Shimizu337-7
和歌山県有田郡有田川町清水337-7
Hours: 11:00a.m.-4:00p.m. 5:00a.m.-9:00p.m.
Closed on Wednesdays
(unless Wednesday falls on a holiday, in which case closed Thursday)
Parking: Available



Edo period route▶

	Wakayama castle	Nichizengu	Itakiso-jinja	Nokamihachimangu	Konoichiba	Aragi-jima	Sasanochyaya-touge	Gomadan-san	Ryujin Onsen
distance	3.2 K m	6.5 K m	8.6 K m	7 K m	7.2 K m	21.4 K m	4 K m	18 K m	
time	6min	17min	30min	15min	36min	50min	6min	30min	

Easy route▶

	Wakayama castle	Nichizengu	Itakiso-jinja	Kishi station	Nokamihachimangu	Oishi-kogen	Aragi-jima	Myoe furusato-kan	Shirama-no-sato	Ryuyu	Ryujin Onsen
distance	3.2 K m	7 K m	7.4 K m	6.9 K m	17.2 K m	14.8 K m	26.1 K m	12.7 K m	28.7 K m	22.2 K m	
time	6min	17min	14min	13min	34min	23min	36min	17min	35min	28min	

video on web

